

dretec

SD-907

AUTO DISPENSER Auto Foam Soap Dispenser Instruction Manual

Thank you very much for buying our product. Before using, read this instruction manual completely, and please use safely right. After reading, please keep importantly so that it may be seen anytime.

CAUTION FOR SAFETY

WARNING	Indicates that there is a possibility that a person may be killed or seriously injured if an improper handling of this item is done.
CAUTION	Indicates that there is a possibility that a person may be injured if an erroneous handling is performed on this item.

WARNING

Do not remodel or disassemble. It may cause malfunction, electric shock, or injury.
Do not use those who can not express their intention by themselves. It may cause accidents and troubles.
When a child or a physically handicapped person is used, be sure to pay attention to those around you so as not to misuse it. It may cause accidents and troubles.
As this product is not waterproof, do not immerse the body in water or apply it to running water. Electric shock, short circuit, fire may result.

CAUTION

Place in a flat and stable place. In an unstable place, the main body may collapse and it may break down.
Do not give a strong shock to the body. It may cause injury or malfunction.
Do not put it in hot places, humid places. Also, do not leave it in the vicinity of heating equipment such as a stove or where it is exposed to direct sunlight. In addition to deteriorating the surface of the equipment, it may cause a fire.
Do not use it in a humid place like a bathroom. It may cause a malfunction.
Do not use for any other purpose. It may cause accidents and troubles.
Do not leave it for long periods with the power turned on. Failure to do so may cause leakage, overheating, explosion or other damage.
Do not pollute the sensor. Sensor may become unresponsive.

Warning about batteries

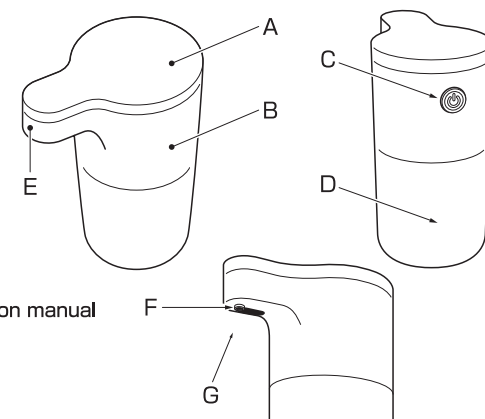
Do not short circuit, disassemble, heat. Please do not throw into fire. It may cause heat generation, liquid leakage or explosion.
Should the alkaline solution adhere to the skin or clothing, rinse with clean water and wash it with clean water when entering the eyes, please get medical attention immediately.
Please put batteries out of reach of infants and children. In case of swallowing, consult a doctor immediately.
Insulate the battery with tape etc. when disposing or storing the battery.
Misting with other metals or batteries may cause ignition or explosion.

Notes on battery

Please be sure to observe the following. If you make a mistake in using the battery, there is a risk of leakage or explosion, which may cause equipment malfunction or injury.
Please correct the polarity (+ -) of the battery.
Please remove the used up batteries immediately from the equipment.
If you do not use for a long time please remove the battery.
When disposing of batteries please follow the instructions of your local municipality.

DIAGRAM

- A: Battery power bar
- B: Main unit
- C: Power button
- D: Tank
- E: LED lamp
- F: Nozzle
- G: Sensor

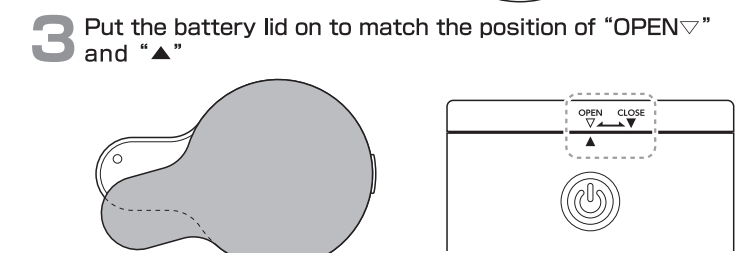


Accessory : Instruction manual

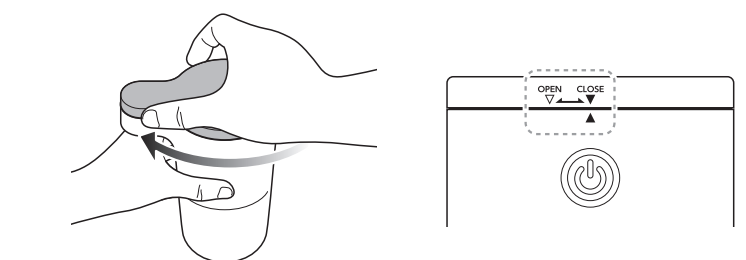
How to insert batteries

※Please replace batteries after turning off the power when the soap is remaining in the tank.

- Turn the battery lid on the top to the right side till it stops and take off it to lift.
- Install new batteries (4x 1.5V AAA Alkaline) observing the polarity signs(+, -) inside the battery compartment.
- Put the battery lid on to match the position of "OPEN" and "▲"

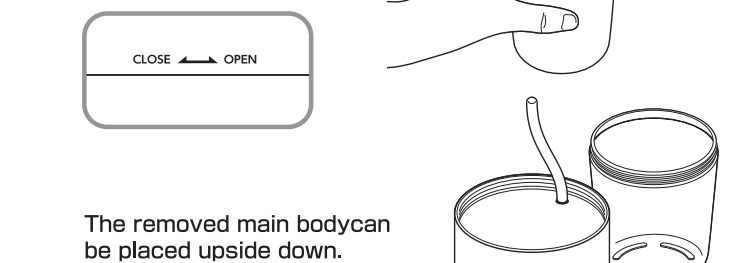


- As per the below illustration, turn the battery lid till "CLOSE" moves to "▲"



How to put form soap in the soap dispenser

- Turn the main body to the direction of "OPEN" and take off after checking whether the power is OFF.
※Please turn it off in case the power is OK.



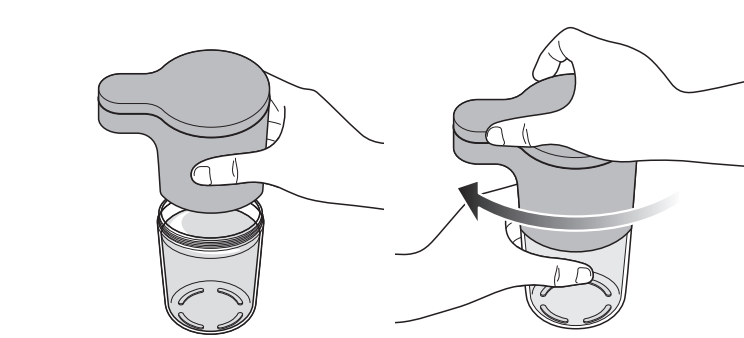
The removed main body can be placed upside down.

- Insert form type hand soap in the tank.



※Please be careful not to pour soap over 350 ml "ここまで"

- Put the main body on the tank and turn it to the direction of "CLOSE" completely.



How to use

- Place the unit in a stable place, press the power button to turn on the power.

※Do not press the power button with a nail. Rubber of the power button may get stuck.

About the power button

When power is on
The LED lamp blinks 3 times.
When the power is off
After the LED lamp lights once and turns off. The power turns off.

- When you hold your hand under the sensor, the LED lamp flashes and bubbles come out from the nozzle.

※Please turn off the power when not using for a long time.
※LED lamp lights during operation.
※Form soap volume is about 1.5ml each time.
※The sensor may not react if the hand position is too low.

For proper use

Please do not leave bubbles at the tip of the nozzle, please use bubbles to remove the bubbles until the end. If bubbles are left in the nozzle, clogging may result.

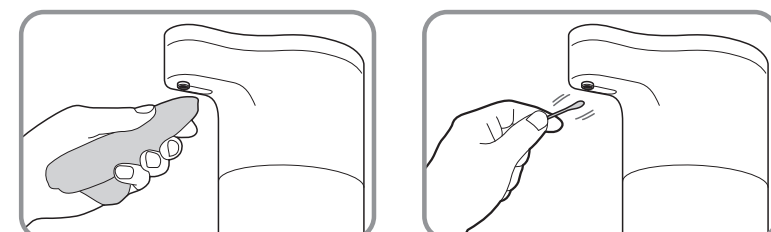
Maintenance

- The body is not waterproof specification. Please be careful not to get wet with water.

Be sure to remove the battery before cleaning. For cleaning, wipe it with a dry soft cloth or a neutral detergent and harden it with a dry soft cloth or a neutral detergent and harden it with a cloth. Do not use volatile solvent such as thinner or benzene. You can remove the tank from the main body and wash it. When bubbles do not come out easily.

- When bubbles do not come out easily.

Bubbles and soap liquid may be solidified in the vicinity of the nozzle. In that case please clean in the following way.
※Please turn off the power.
※When soap liquid is contained, please refrain from turning the main body upside down, please do not turn it aside.
※Please go through ① ② several times depending on the stuck state.



① Soften bubbles solidified with towels wet with lukewarm water. ② Wipe with a cotton bud or the like.

Product Specifications

Product code : SD-907
Product Name : Auto Foam Soap Dispenser
Size : Approx 88mm×130mm×178mm
Weight : About 340 g (excluding battery weight)
Evening capacity : Approximately 350 ml.
Consumption current : about 300 mA or less
Operating temperature : 5-40 °C
Drip-proof : IPX 2
Battery life: Approximately 4 months (15 times a day)

※Please understand that product specifications may be changed without notice for improvement etc.
※This product may be left inside the water drops due to the manufacturing and inspection process. Water remaining in the interior may come out before use, is no problem on the product at all.

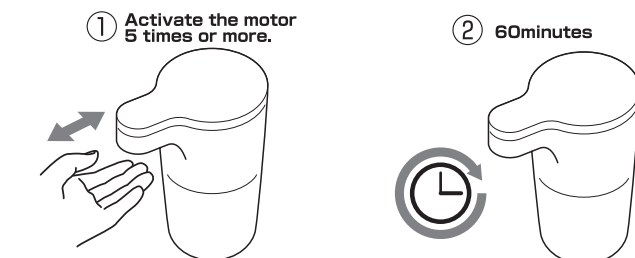
Usage Notes

- This product is only for foam type hand soap. Dishwashing detergent, liquid cleanser, alcohol disinfectant, viscous liquid, shampoo, liquid type hand soap, dilution type hand soap, etc. can not be used.
- When replacing with another brand of soap solution, please wash and dry the inside of the tank before use.
- Do not leave the soap solution inside this product when not using for a long time.
- Please clean the nozzle regularly.
- Do not press the power button with wet hands.
- Do not move the main body with holding the battery power bar part.
- Please make sure that the soap solution will spill if you turn the main body upside-down or overturn it too much.
- Do not use this sensor as it may be false sensing in places like mirrors.

Trouble shooting

- No foam

When using for the first time or when not using it for a long period of time it may be difficult for foam to come out. In that case please try the method on the right. Make it work five times or more.
① Activate the motor 5 times or more.
② Leave for about 60 minutes in an environment at 15°C or higher.



- LED lamp blinks or does not turn on

Battery capacity is low. Please replace batteries with new AAA alkaline.

- No bubbles in the cold season

If the installation location is less than 5°C, bubbles may become difficult to generate. In that case leave for at least 60 minutes under an environment of 15 °C or more and try again.